

# Carriage Changing Process

## Expert/Expert II Expert LX /Expert II LX

Revision History :

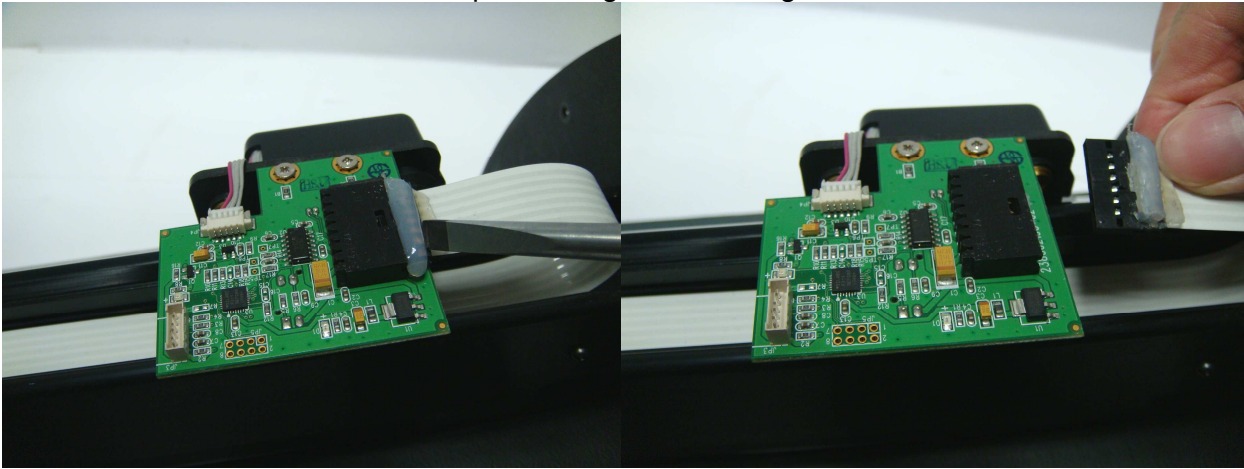
Version	Date	Page	CONTENTS
1.0	May 24, 2014		First release
2.0	Sept. 16, 2015		Add Expert II, Expert II LX

## How to replace Carriage

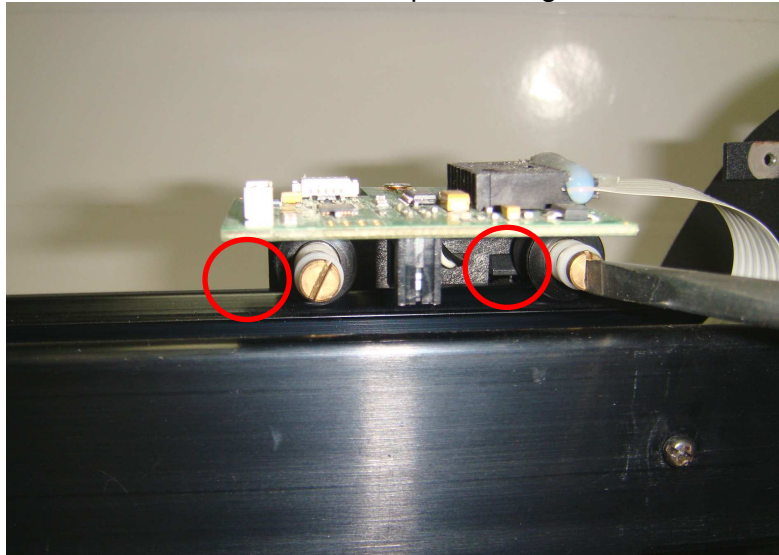
### Tools Required:

- Phillips screwdriver
- Slotted screwdriver
- Allen Wrench

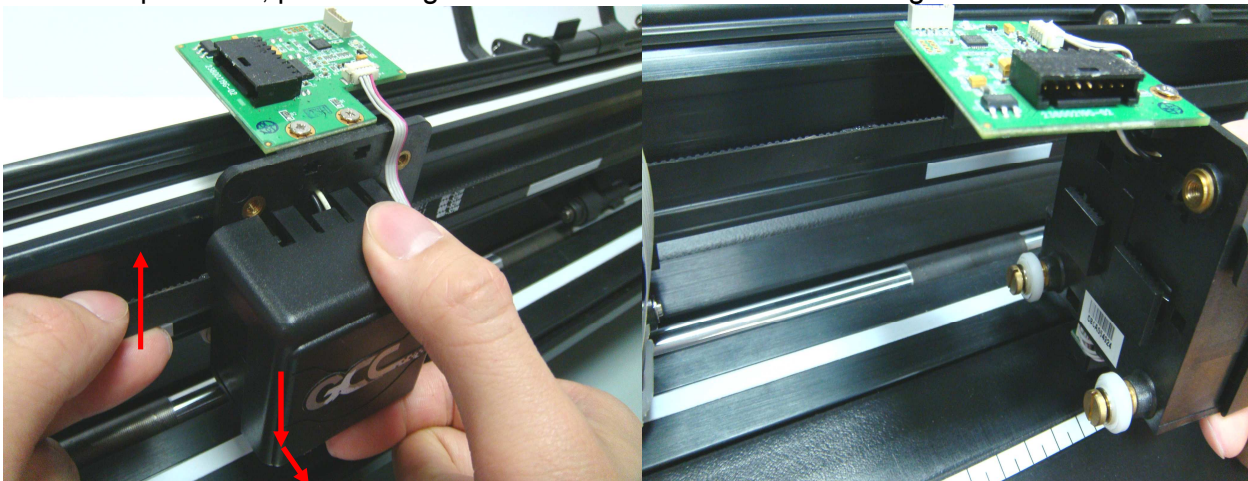
1. Use Slotted screwdriver to scrape off the glue on carriage PCB connector.



2. Use Slotted screwdriver to loose two screws on top of carriage from the back.

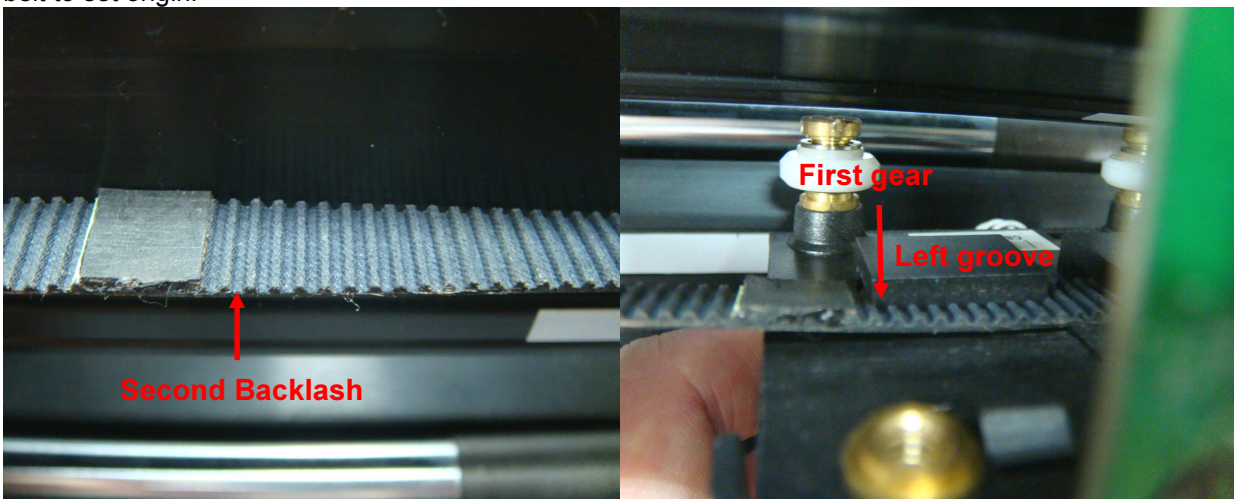


3. Pull up the belt, push carriage forward down to remove the carriage set from the belt.



**Installation Note :**

When install carriage, the first gear on left groove of the carriage must be set from onto the second backlash of the belt to set origin.



Belt completely set into groove.

