

Control Panel Changing Process

Expert/Expert II Expert LX /Expert II LX

Revision History :

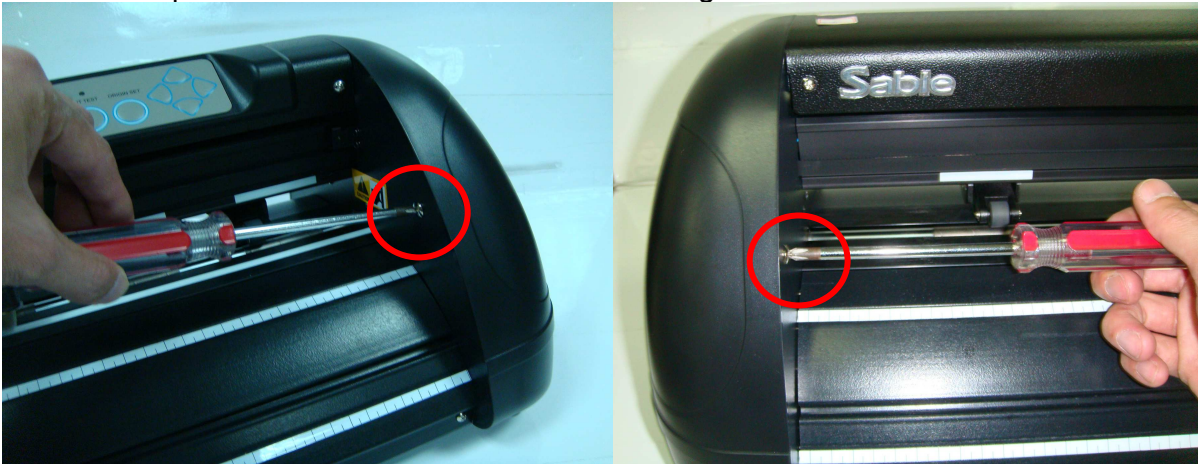
Version	Date	Page	CONTENTS
1.0	May 24, 2014		First release
2.0	Sept. 16, 2015		Add Expert II, Expert II LX

How to replace Control Panel

Tools Required:

- Phillips screwdriver
- Slotted screwdriver
- Allen Wrench

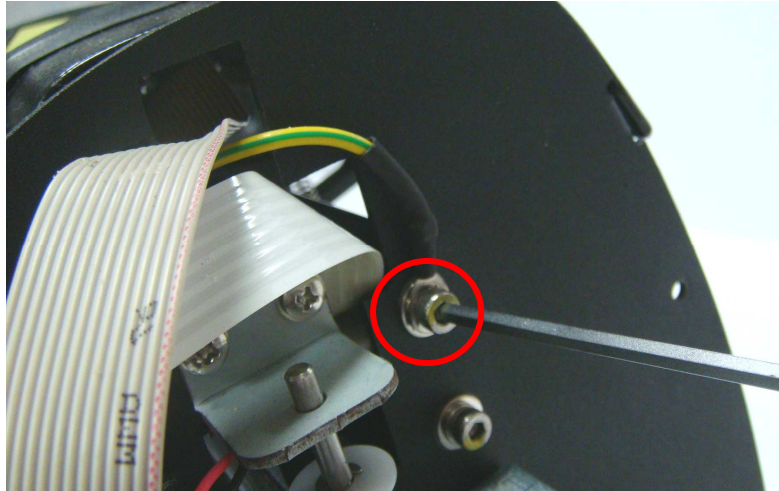
1. Use Phillips screwdriver to loose two screws on right cover.



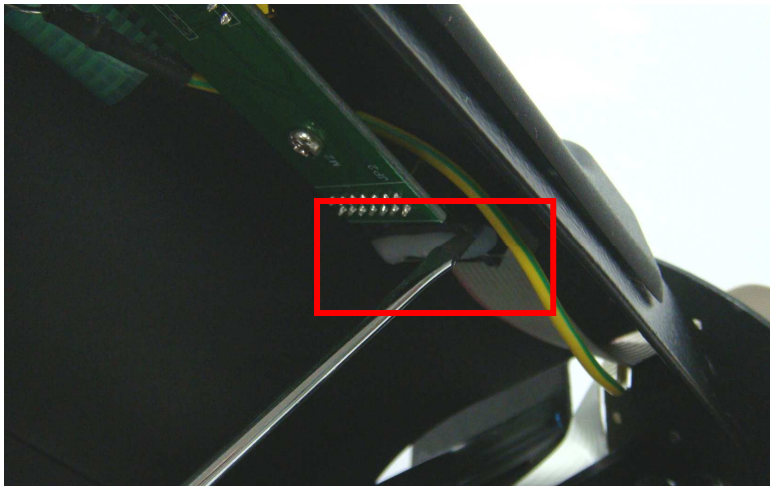
2. Use Phillips screwdriver to loose four screws on top cover.



3. Use Allen Wrench to loose Ground cable screw on right side support.



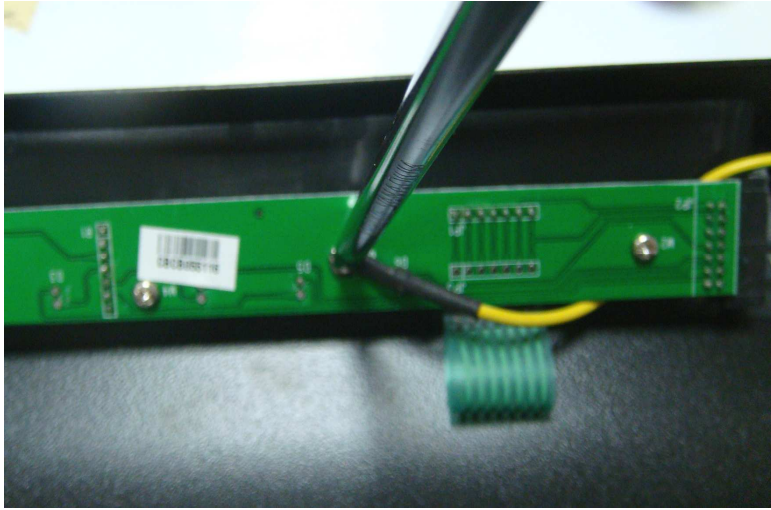
4. Use Slotted screwdriver to scrape off glue on flat cable connector.



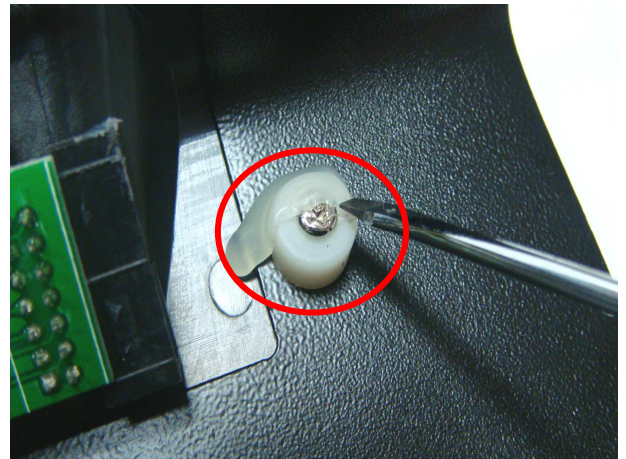
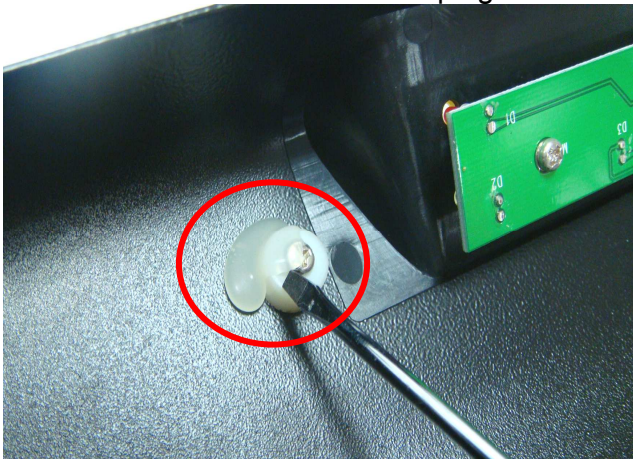
5. Pull out flat cable on control panel, and then remove the top cover.



6. Use Phillips screwdriver to loose screw on control panel board.



7. Use Slotted screwdriver to scrape glue and remove the screws.



8. Change control panel.

