

Mainboard Changing Process

Expert/Expert II Expert LX /Expert II LX

Revision History :

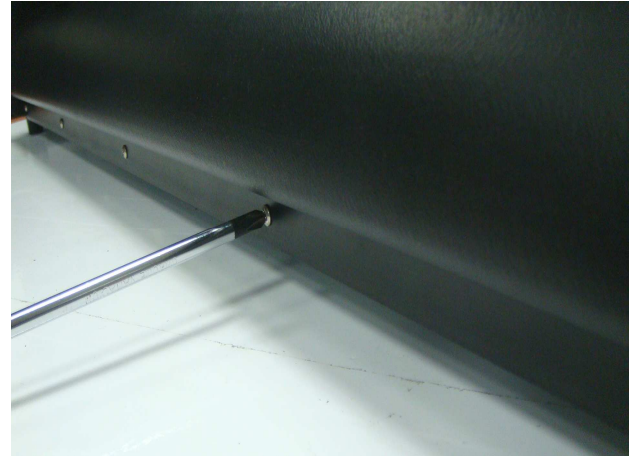
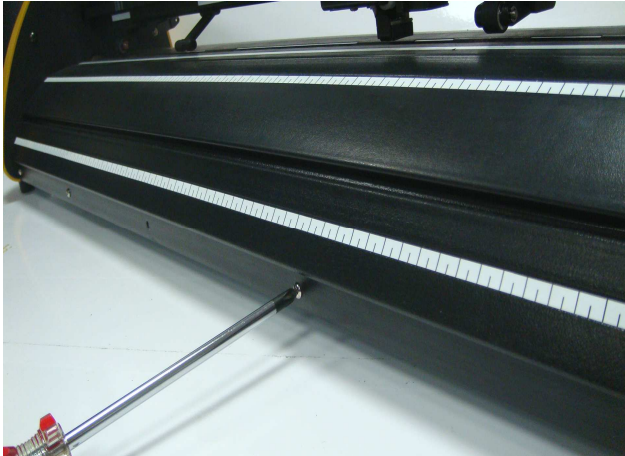
Version	Date	Page	CONTENTS
1.0	May 24, 2014		First release
2.0	Sept. 16, 2015		Add Expert II, Expert II LX

How to replace mainboard

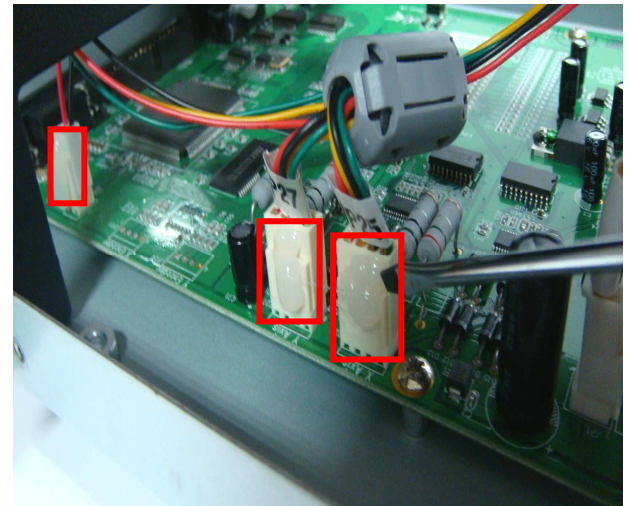
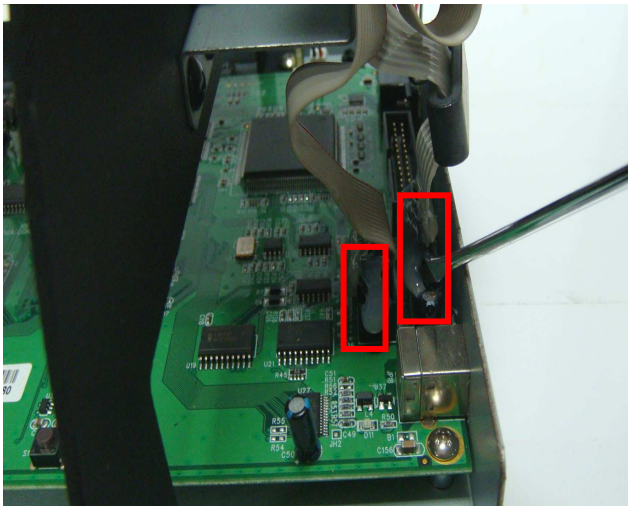
Tools Required:

- Phillips screwdriver
- Slotted screwdriver

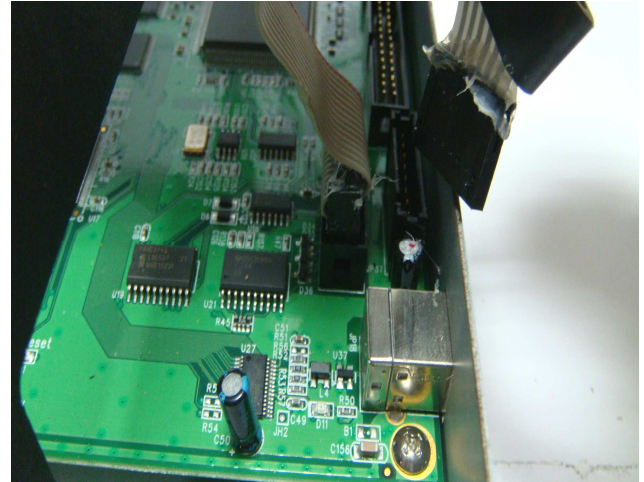
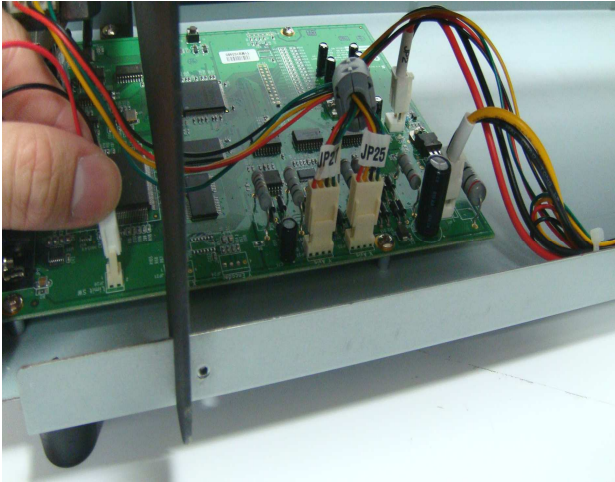
1. Use Phillips screwdriver to loose screws on Front platen extension and Rear platen extension.



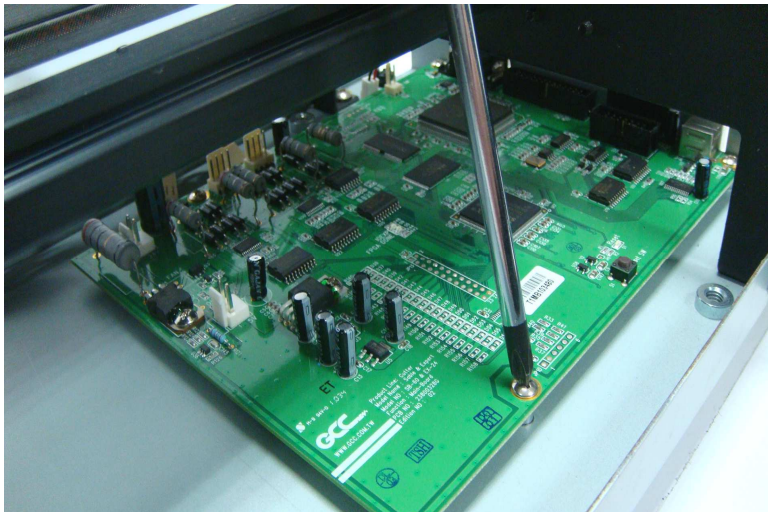
2. Use Slotted screwdriver to scrape off the glue on all connector.



3. Unplug all connectors.



4. Use Phillips screwdriver to loose four screws on main board.



5. Change Main board.

