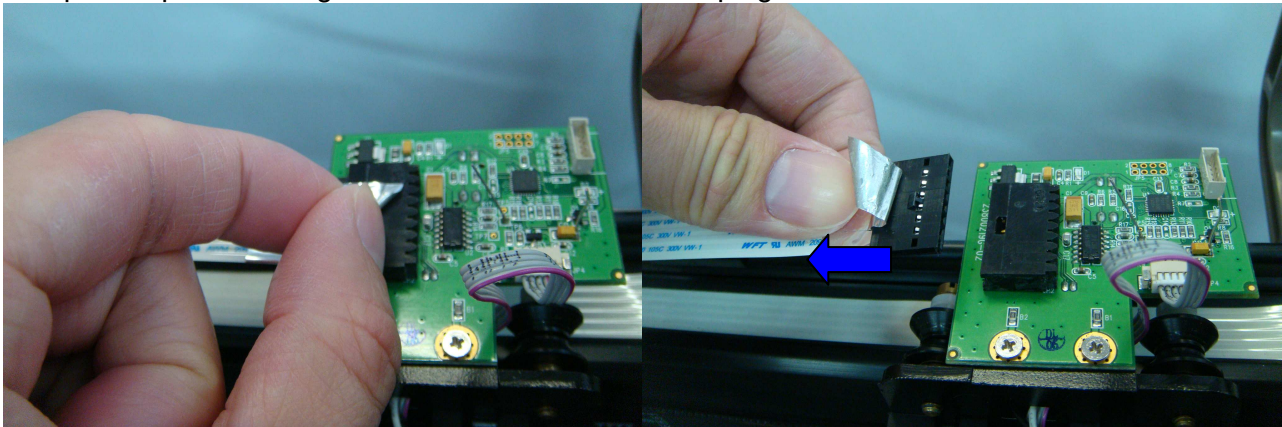


How to replace Carriage

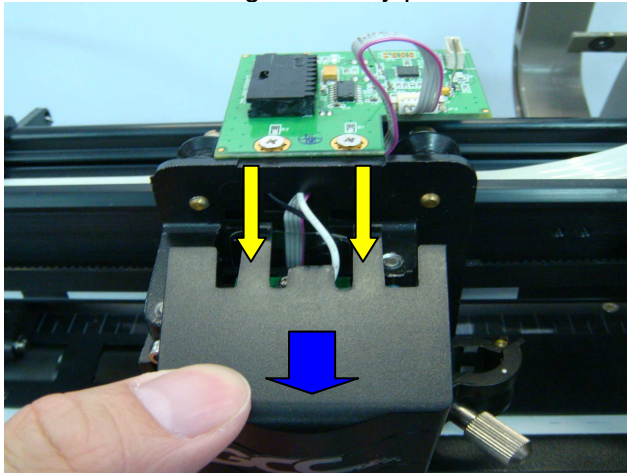
Tools Required:

- Slotted screwdriver
- Wrench

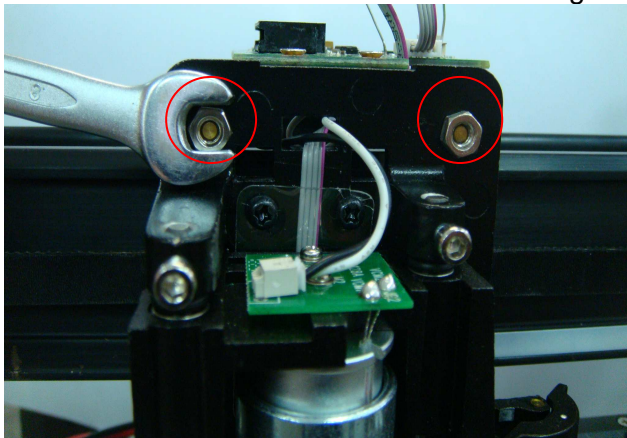
1. Turn off machine and un-plug AC power
- 2 Remove the top cover by loose 4 screws at 4 corners.
3. Rip the tape on carriage PCB connector and then unplug flat cable.



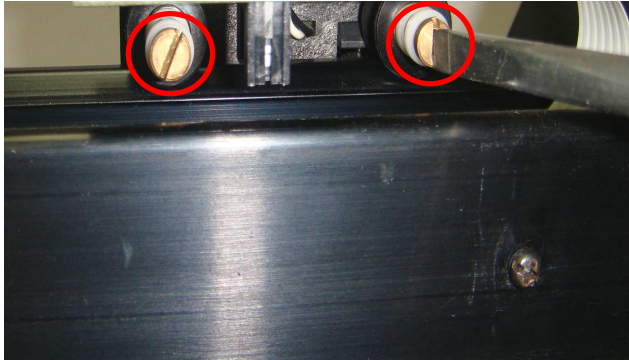
4. Remove the carriage cover by press down on both sides from the top than pull out.



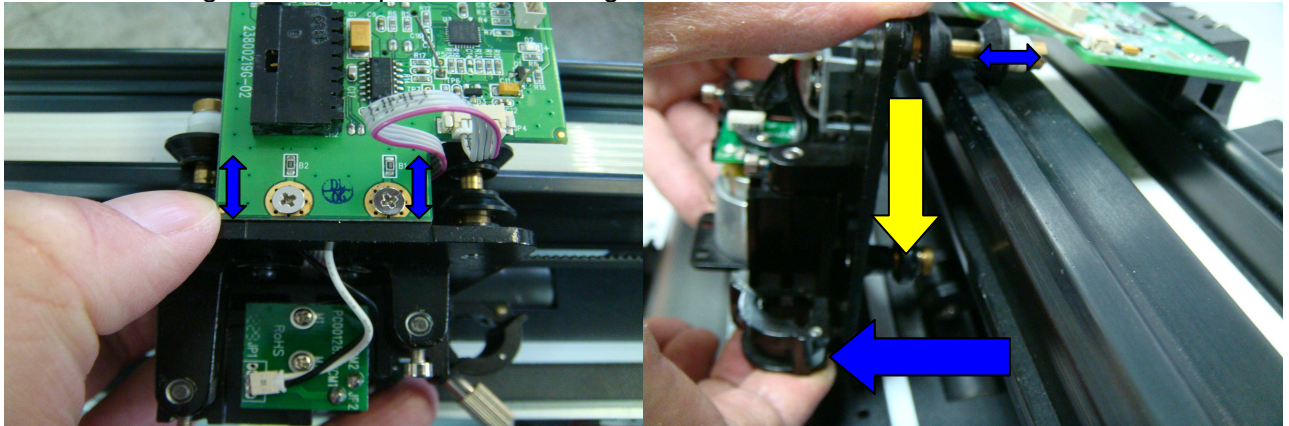
5. Use wrench to unscrew 2 nuts on the carriage.



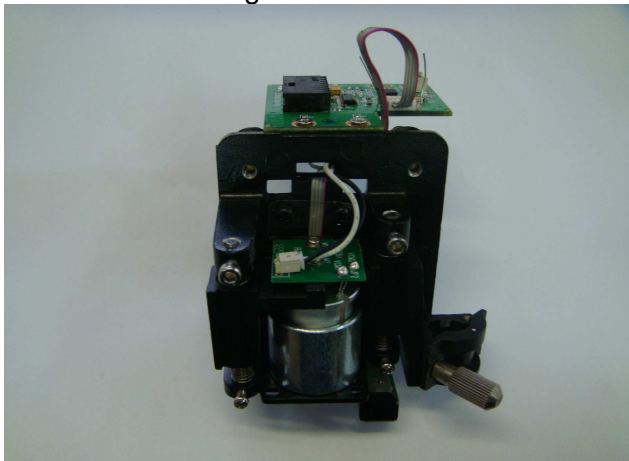
6. Use Slotted screwdriver to loose two screws on top of carriage from the back. (NOTE: loose it but not to remove).



7. Push the carriage down and pull out the carriage from the bottom.

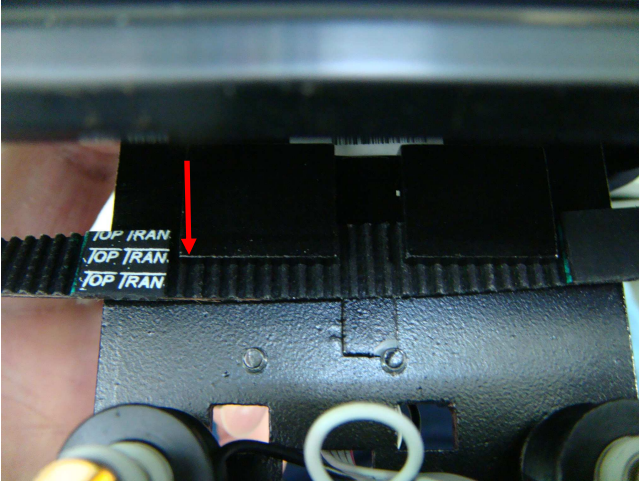


8. Remove the carriage set from the main rail



Installation Note

When install carriage, the first gear on left groove of the carriage must be set from onto the second backlash of the belt to set origin.



Belt completely set into groove.

